



CCSC - Representative Sports Pathways



Sports Pathways Abbreviations

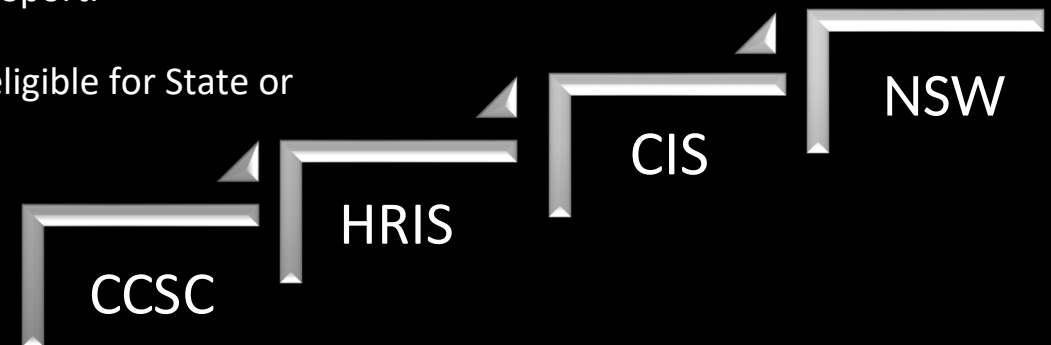
- Junior College
 - HRIS - Hunter Region Independent Schools
 - CIS – Combined Independent Schools
 - State – State Level Sport NSW
 - National - Australian Selection
-
- Senior College
 - HRIS - Hunter Region Independent Schools
 - AICES - Association of Independent Co-Educational Schools
 - CIS – Combined Independent Schools
 - State – State Level Sport NSW
 - National - Australian Selection



CCSC – Junior College Representative Sports Pathway

Four step process explained:

1. Student registers and attends sports trials arranged by CCSC for their chosen sport. (CCSC sport trials are open to ALL students regardless of the sport they specialise in).
2. CCSC selected squads then compete in HRIS events.
3. From the HRIS events students who qualify automatically progress to then represent AICES. At ASISSA tournaments CIS selectors decide upon their squads or individuals can be nominated by the Head of Sport.
4. A successful student who performs at CIS level is then eligible for State or National selection.

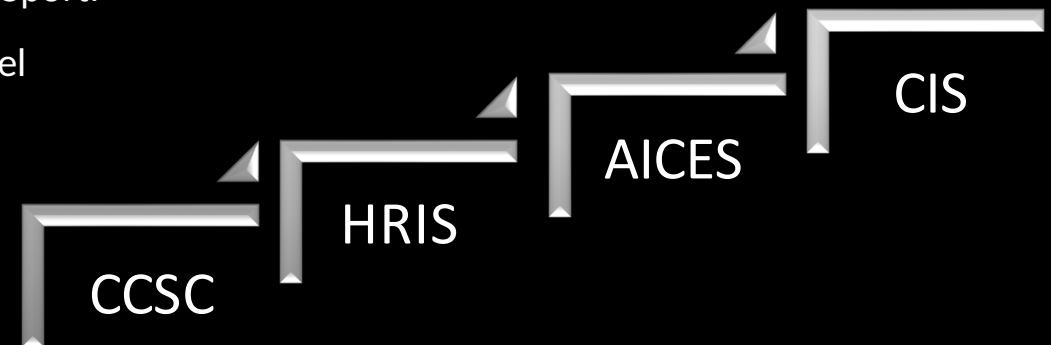


CCSC – Senior College Representative Sports Pathway



Four step process explained:

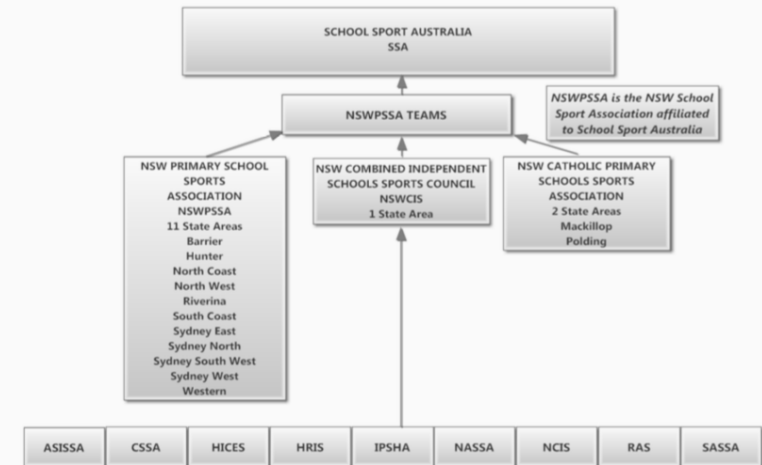
1. Student athlete registers and attends sports trials arranged by CCSC for their chosen sport. (CCSC sport trials are open to ALL student athletes regardless of the sport they specialise in).
2. CCSC selected squads then compete in HRIS events.
3. From the HRIS events student athletes who qualify automatically progress to represent AICES. At ASISSA tournaments CIS selectors decide upon their squads or individuals can be nominated by the Head of Sport.
4. A successful student athlete who performs at AICES level is then eligible for State and National team selection.



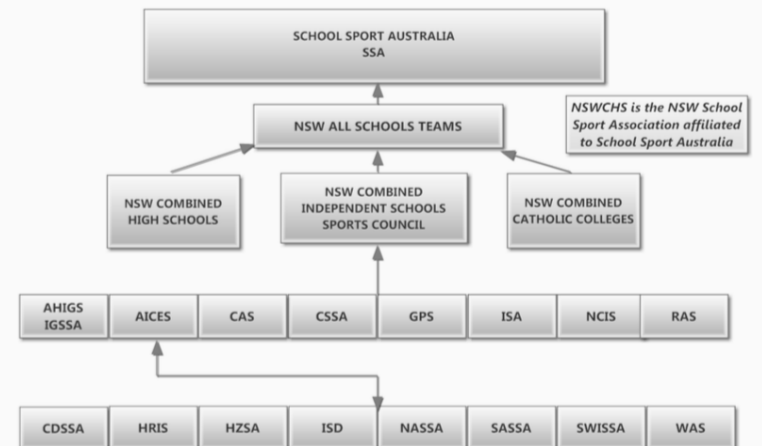
CCSC Selection Protocol

- Trent Worrall - Director of Sport
- Melanie Sayers - Rep Sport Coordinator
- Each Independent School Sports Association has between 8-12 member schools. Sports events quickly jump from 'on campus' trials to competition against some of the best athletes in their age bracket in NSW.
- For a CCSC student athlete to make an HRIS team they MUST be up to date with all their academic classwork (clearance provided by teachers), be fully fit and participating in training on campus at the time of event or trials.
- If a CCSC student athlete is selected to represent an HRIS team and fails to show on the day without a valid reason or without notifying the representative sport coordinator 24 hours in advance then that student athlete is not permitted to represent HRIS again that calendar year.

PRIMARY SCHOOL SPORT STRUCTURE

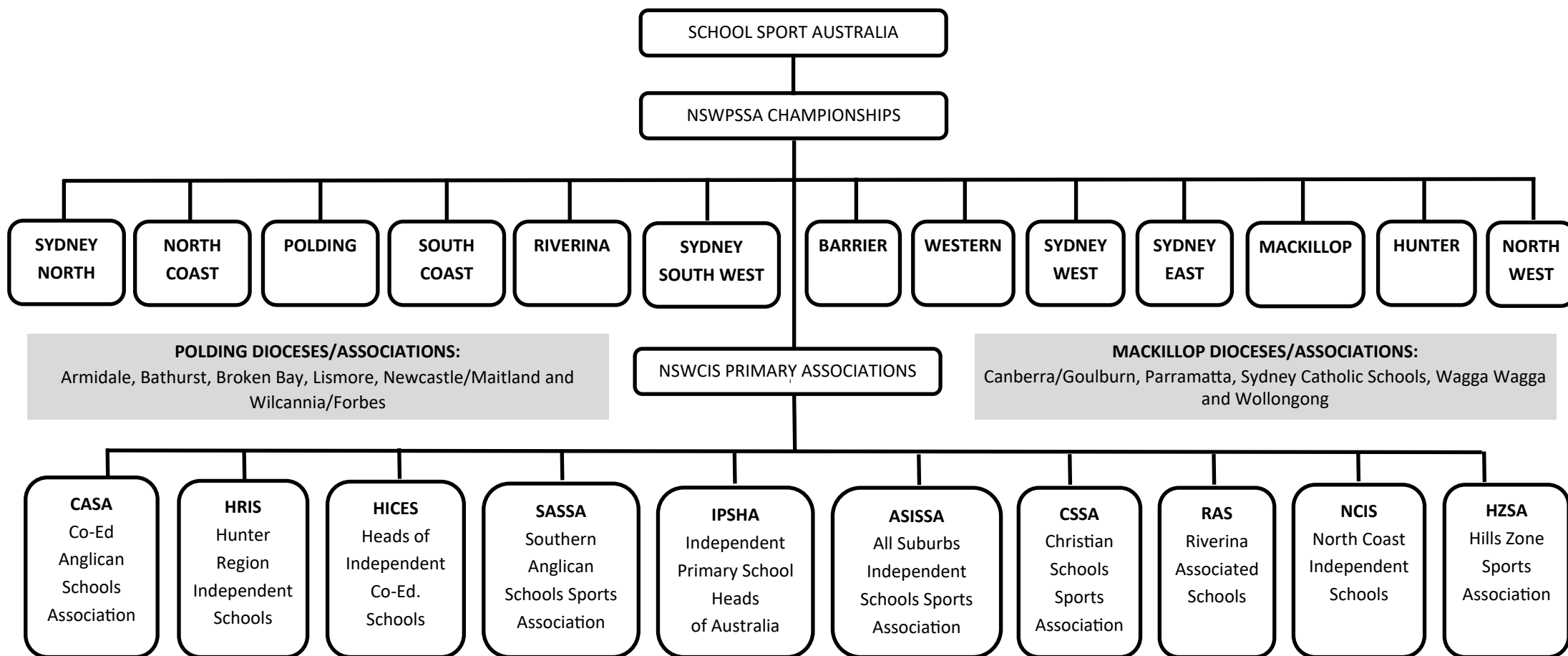


SECONDARY SCHOOL SPORT STRUCTURE





PRIMARY SCHOOLS REPRESENTATIVE PATHWAY



NOTES:

- **NSWCIS** feeds directly into the NSWPSA Championships at the Primary Level, along with the other 12 Associations (10 x Government and 2 x Catholic). These Associations compete as Teams at the NSWPSA Championships. From the NSWPSA Championships a Team is selected to represent NSW at the School Sport Australia Championships.
- A brief summary of how each Association at the NSWCIS Level works is provided on the next page as there are often steps from the School Level into the Association Level prior to the NSWCIS Level—these are different from Association to Association often depending on numbers and location.

ASSOCIATION SUMMARY:

CASA—Formerly known as NASSA (New Anglican School Sports Association) has recently undergone a rebrand and new change—CASA which stands for Co-Educational Anglican Schools Association which encompasses more than just Sport. CASA currently consists of 9 x Member Schools. **Access to CASA is limited.**

HRIS— In 1991, HRIS sporting competitions commenced with events conducted in Swimming, Athletics, Cross Country, Netball, Indoor Cricket, Cross Country, Basketball, Volleyball, Soccer and Touch Football. Currently there are 16 member schools stretching from Port Macquarie in the north, Tamworth in the west and Erina in the south. **Access to HRIS is Regional.**

HZSA—The Hills Zone Sports Association provides a pathway to CIS and state representation for primary and secondary students. Students can gain representation in the major carnivals of swimming, cross-country and athletics as well as many other representative sports. In addition, gala days, championship days and semester one and two competitions across a variety of sports provide primary students with the opportunity to play weekly competitive inter school sport. Currently there are 13 member schools within the Hills Zone Sports Association accessing CIS Sport. HZSA was the most recent addition to CIS at the Primary Level—they have been an active member since 2020. **Access to HZSA is Open and Regional.**

NCIS—North Coast Independent Schools Association (NCIS). NCIS comprises of 12 primary schools (2023). NCIS was formed to access CIS sport. **Access to NCIS is Open and Regional.**

CSSA— The Christian Schools Sports Association consists of NSW schools within the Christian Education National (CEN), Christian Schools Australia (CSA) and other independent Christian Schools. It is an association which has been formed to foster Christian thought and practice through sporting events within and between Christian Schools. CSSA currently consists of 78 Member Schools. At the Primary Level 68 Schools access CIS (2023), state-wide. **Access to CSSA is Open based on Religion and Region.**

RAS— RAS was formed to provide access to CIS sport, for the schools from Riverina Area. There are currently 11 x Member Schools in the Primary Sector (2023). **Access to RAS is Open and Regional.**

HICES—HICES membership is open to non-government, co-educational schools in NSW and ACT. The HICES Sports Convenors oversee all Junior School sporting arrangements for HICES schools that use HICES as a pathway to CIS in the Primary space. There are many HICES members who do not access the CIS pathway through HICES particularly at the Primary Level. Some chose not to access CIS Sport, whilst some access CIS through another Association. **Access to HICES is Open—there are extra rules regarding HICES membership.**

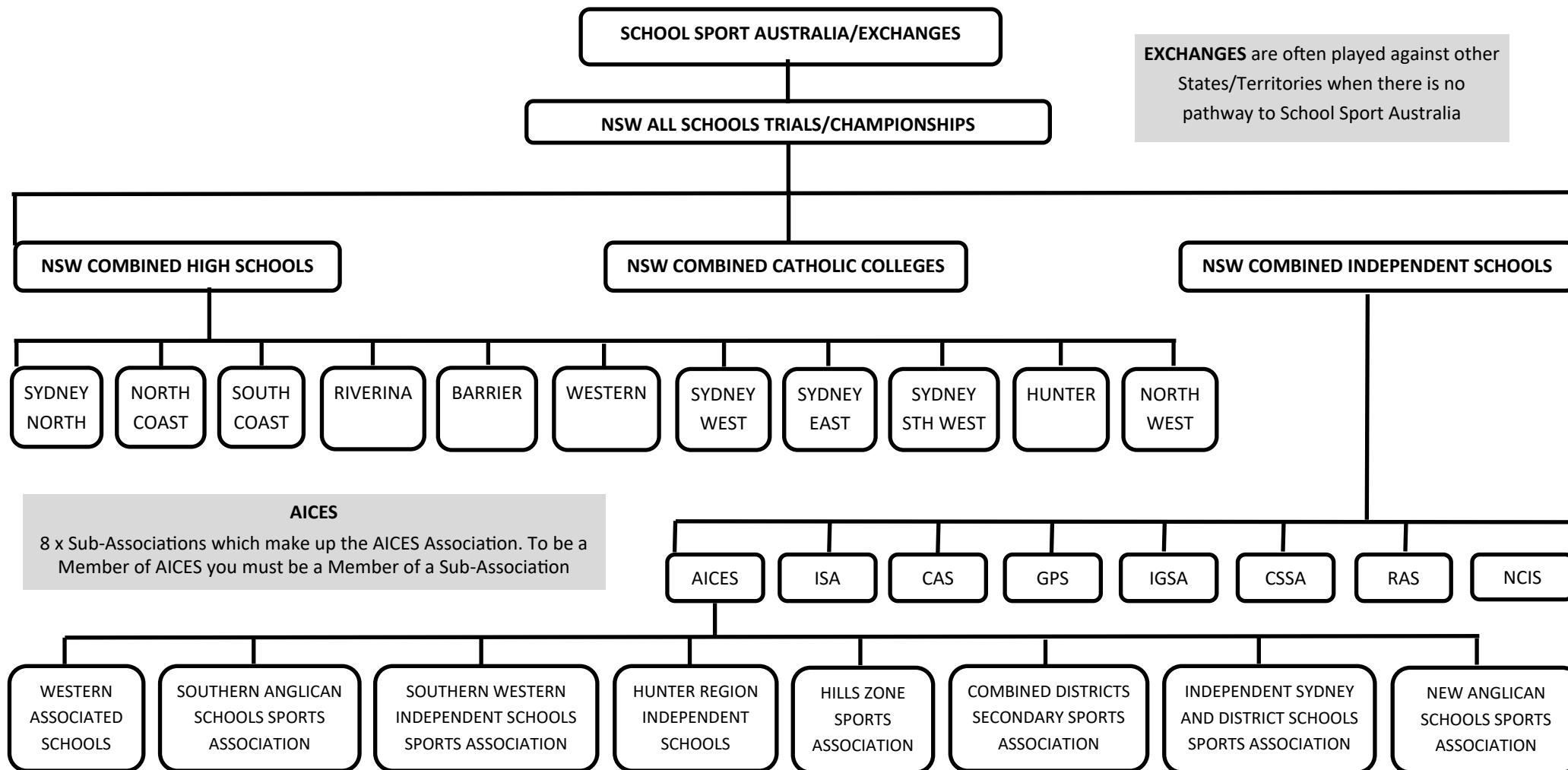
SASSA—SASSA was established in 2005 for New Anglican Schools based in Sydney's South Coast Region providing students with a pathway to CIS and NSW All Schools.

IPSHA— IPSHA NSW Sport provides sporting opportunities and pathways for primary students in all independent schools where the Head of Junior School is a member of IPSHA, NSW Branch. Currently there are 52 Member Schools within IPSHA...it is the largest enrolment base within the Primary Association Sector. **Access to IPSHA is Open and Statewide, although the Head of the Junior School must be a member of IPSHA.**

ASISSA— E.S.I.S.S.A. (Eastern Suburbs Independent Schools Sports Association) began in 1988. Three Jewish schools (Moriah, Mount Sinai and Emanuel) started a small interschool competition to lift the profile of sport. In 1996, E.S.I.S.S.A. was incorporated under the Associations Incorporation Act 1984 (Department of Fair Trading), and a name change to A.S.I.S.S.A. was made in July 1997 under the Associations Incorporation Act (Department of Fair Trading). ASISSA currently has 20 Member Schools. **Access to ASISSA is Open.**



SECONDARY SCHOOLS REPRESENTATIVE PATHWAY



EXCHANGES are often played against other States/Territories when there is no pathway to School Sport Australia

NOTES:

- NSW COMBINED CATHOLIC COLLEGES** pathway is not outlined on their website, but selections would be made via their Diocese similar to what occurs at the Primary Level without being divided into Polding and Mackillop.

ASSOCIATION SUMMARY:

AICES—the Association of Independent Co-Educational Schools (AICES) was formed in 1997. Since its inception AICES has grown from approximately 7000 enrolments to over 33,000 enrolments. AICES comprises of 8 sub-associations, with schools needing to be a member of a sub-association to be a member of AICES and consequently be able to access the CIS Representative Pathway. AICES was established to provide access for Independent Schools to CIS—AICES is a state-wide Association.

There are currently 82 Member schools (2023). AICES is the most accessible Association at the Secondary Level—sub-associations do not have direct access to CIS at the Secondary Level—HZSA and SASSA are both sub-associations of AICES at the Secondary Level. **Access to AICES is Open, however you must be a Member of a sub-association.**

ISA— the initial purpose of ISA was to provide inter-school sporting competition on a home and away basis for both genders from Year7-Year 12. ISA is currently made up of 18 Member Schools with Students competing in the ISA Competitions then eligible to be selected for higher representative honours—i.e. NSW CIS and NSW All Schools. **Access to ISA is Open although there are membership requirements to be an ISA School.**

CAS— The Associated Schools of NSW Inc is a group of six independent schools located in Sydney, Australia which share common interests, ethics and educational philosophies. They also compete with each other across a range of areas, including sport, cadets, debating and chess and share other cultural activities such as Ecumenical services and art shows. CAS caters for Boys Schools only and was established prior to CIS. **Access to CAS is closed.**

NCIS—North Coast Independent Schools Association (NCIS). NCIS comprises of 10 schools at the Secondary Level. **Access to NCIS is Open but it is Regionally based.**

CSSA— The Christian Schools Sports Association consists of NSW schools within the Christian Education National (CEN), Christian Schools Australia (CSA) and other independent Christian Schools. It is an association which has been formed to foster Christian thought and practice through sporting events within and between Christian Schools. CSSA currently consists of 78 Member Schools and was formed prior to CIS. At the Secondary Level 63 CSSA Member Schools access the CIS Pathway. **Access to CSSA is Open based on Religion and Region.**

RAS—was formed to provide access to CIS Sport for schools from the Riverina Area. There are currently 9 x Member Secondary Schools representing RAS. **Access is Open but is Regionally based.**

AAGPS— AAGPS of NSW became an incorporated association of New South Wales on 25 October 2017, to be hence known as Athletic Association of Great Public Schools of New South Wales Incorporated, or AAGPS of NSW Inc. There are currently 9 x Member Schools who compete under the AAGPS banner—The Armidale School, Shore, Sydney Grammar School, Sydney Boys High School, St. Ignatius College, St. Josephs College, The Kings School, Newington College, The Scots College. AAGPS caters for Boys Schools only and was established prior to CIS. **Access to AAGPS is closed.**

IGSA—IGSA Sport is a sub-committee of IGSA, the Association of Heads of Independent Girls' Schools, NSW trading as Independent Girls' Schools Association (IGSA). There are 32 independent girls' schools within IGSA and IGSA Sport's role is to provide sporting activities for the students of members' schools. Of the 32 Girls Schools within IGSA, 22 of these Schools are Members of CIS and provide access to their Students to the Representative Pathway. IGSA caters for Girls Schools only and was established prior to CIS. **Access to IGSA is closed.**

Representative Pathways Are Open To All CCSC Student athletes In These Sports

For any further information or to
discuss individual sports nominations
please contact:

Melanie Sayers (Rep Sport Coordinator)

msayers@ccsc.nsw.edu.au

Trent Worrall (Director of Sport)

tworrall@ccsc.nsw.edu.au

