

The logo features a red star with a white outline above the text "ST. GEORGE'S PARK" in a bold, white, sans-serif font. The background of the entire page is a grayscale photograph of an indoor football pitch with players and a goal in the distance. A large, semi-transparent white flag with the St. George's Park crest and name is draped across the right side of the image.

**ST.  
GEORGE'S  
PARK**

**BROCHURE 2018/2019**

# **GLOBAL FOOTBALL PRO**

**YOUR PROFESSIONAL FOOTBALL EXPERIENCE**

**[WWW.GLOBALFOOTBALLPRO.COM](http://WWW.GLOBALFOOTBALLPRO.COM)**

# BETTER TO BE DIFFERENT



## iT7xr

- Lightweight Bluetooth® headphones
- Noise reduction and echo cancellation
- Playback time up to 10 hours
- Integrated microphone for hands free calls
- Adjustable headband and cushioned cans
- Compatible with IOS and Android

## iT7x2i

- Bluetooth® headphones with Superior sound quality
- Up to 20 hours playback time
- Integrated microphone for hands free calls
- Cushioned headband and cans for comfort
- Compatible with IOS and Android



01543495243



@IT7Audio



[www.it7audio.co.uk](http://www.it7audio.co.uk)



@IT7Audio



# GLOBAL FOOTBALL PRO

YOUR PROFESSIONAL FOOTBALL EXPERIENCE

## CONTENTS

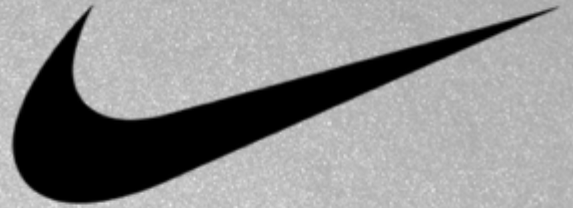


- 5 - Welcome from Ian Taylor
- 7 - Global Football Pro
- 9 - St. George's Park
- 10 - Packages
- 11 - Accommodation
- 12 - Professional Player Experience
- 13 - PPE sample itinerary
- 15 - PPE Showcase Gallery
- 16 - Exclusive Tournament Experience
- 17 - Tournament sample itinerary
- 18 - Tournament sample format
- 19 - Forthcoming Tournaments
- 22 - What is included
- 24 - Testimonials
- 25 - Testimonials
- 26 - Coaching Masterclass Experience
- 27 - Professional Fan Experience
- 28 - Stadiums
- 29 - National Football Museum
- 30 - Attractions - North
- 31 - Attractions - South
- 33 - GFP Players
- 35 - GFP Partners





**Kitlocker.com**<sup>™</sup>



**OFFICIAL SUPPLIER FOR  
GLOBAL FOOTBALL PRO KIT**



**[WWW.KITLOCKER.COM/GLOBALFOOTBALLPRO](http://WWW.KITLOCKER.COM/GLOBALFOOTBALLPRO)**



# GLOBAL FOOTBALL PRO

YOUR PROFESSIONAL FOOTBALL EXPERIENCE



WELCOME FROM IAN TAYLOR



After a career spanning almost 10 years in the Premier League, I have been lucky enough to play at some incredible places. Now, with our company Global Football Pro, we can give aspiring young footballers (**boys and girls**) and their clubs, the opportunity of playing at some of the best facilities the UK and English Premier League have to offer! This includes World Cup semi finalists ENGLAND's amazing training base, St. George's Park! Our fantastic team can put together the most exciting of itineraries for your team to experience. From touring some of the best Premier League stadiums to playing at the very best academies and training grounds to being involved in some fantastic tournaments.

Take a look and see what we can offer your team!

*BEST WISHES IAN TAYLOR*



# sarto

— LUXURY TAILORING —

MADE TO MEASURE

'Using the finest British and Italian cloths'

**Global Football Pro Official formal wear Partner**



**YOU CAN FIND US AT**

**Regina House, 1 Victoria Street, Liverpool, L2 5QA**

---

**Email: [sarto@luxurytailoring.co.uk](mailto:sarto@luxurytailoring.co.uk) Tel: 07455 799097 or 07909 511884**

**VITALE BARBARIS CANONICO // LORO PIANA // FERLA // FOX BROTHERS**



# GLOBAL FOOTBALL PRO

YOUR PROFESSIONAL FOOTBALL EXPERIENCE



## GLOBAL FOOTBALL PRO

Global Football Pro is an **ALL INCLUSIVE** Professional Football Experience and events company aimed at all aspiring players, boys and girls aged 8-21 and football fans of all ages. GFP is based at St. George's Park, (home of the England National team) that uses its extensive footballing network to provide the best experience for its clients, offering a true insight into the English game and getting up close and personal with ex Premier League players. Visiting some of the biggest clubs in the world and also the opportunity to watch them play LIVE in the Premier League and Champions League.

Both our Player and Fan Experiences are open to schools, colleges, grassroots football clubs, professional academies and corporate businesses. Contact us now for more details.

Global Football Pro's experience, insight and knowledge of the professional game makes us the number 1 provider of these unique footballing experiences. Our tours are designed and operated by former Premier League and professional footballers. Aspiring players will have the opportunity to play on the best surfaces in England and test their playing level by playing against professional football club academies with the chance of getting noticed and becoming a Professional Footballer.





**HONDA**



Global Football Pro  
Official vehicle supplier

Email: [simon.bradbury@fish-bros.co.uk](mailto:simon.bradbury@fish-bros.co.uk)  
Telephone: 01793 401106



# GLOBAL FOOTBALL PRO

YOUR PROFESSIONAL FOOTBALL EXPERIENCE



## ST. GEORGE'S PARK

St. George's Park (SGP) is the English Football Association's National Football Centre (NFC) On a 330-acre (130 ha) site at Burton-Upon-Trent, Staffordshire. The centre was officially opened by The Duke and Duchess of Cambridge on 9 October 2012.

The purpose of the centre is to be the base for all coaching and development work undertaken by the FA, and the training and preparation ground for all of the England National football teams.

St. George's Park is home to every England national team age group, male and female. SGP also hosts matches for professional clubs world wide. It is also used as a pre season training camp with teams such as Barcelona, Manchester United, Benfica and Manchester City playing games there. SGP is also used by other international teams and associations when England are not on site.



St. George's Park is one of Global Football Pro's amazing facilities.



# GLOBAL FOOTBALL PRO

YOUR PROFESSIONAL FOOTBALL EXPERIENCE

## PACKAGES



PROFESSIONAL PLAYER  
SHOWCASE EXPERIENCE

A black and white photograph of a football team lined up on a field in front of a goal.

ELITE TOURNAMENT  
EXPERIENCE

A black and white photograph of a trophy, several water bottles, and a football on a table.

GLOBAL



FOOTBALL PRO



COACHING MASTERCLASS  
EXPERIENCE

A black and white photograph of a coach talking to a group of young players on a field.

PROFESSIONAL FAN  
EXPERIENCE

A black and white photograph of a large crowd of people at a stadium.

PLEASE SEE DETAILS BELOW FOR EACH TOUR EXPERIENCE.  
GFP TOURS CAN BE DESIGNED FOR EACH TRAVELLING PARTY TO SUIT THEIR REQUIREMENTS.



HILTON HOTEL, ST. GEORGE'S PARK

# GLOBAL FOOTBALL PRO ACCOMMODATION



HALLMARK HOTEL, MICKLEOVER

hallmark  
HOTELS



COPTHORNE/MILLENNIUM HOTEL, CHELSEA

MILLENNIUM  
HOTELS



VILLAGE  
HOTELS  
VILLAGE HOTEL, MANCHESTER



MARRIOTT  
HOTELS  
MARRIOTT HOTEL, DERBY

## GLOBAL FOOTBALL PRO FULL BOARD HOTELS

Global Football Pro only use 3/4\* high quality hotels around the UK, which includes the on-site Hilton Hotel at St. George's Park subject to availability and have amazing alternative hotel choices around the UK with Hallmark, Marriott, Village and Copthorne/Millennium hotels in Manchester and London. All our hotels are offered on a full board basis. Hotels will be specified upon each bespoke booking.



HOTEL FOOTBALL  
Old Trafford

HOTEL FOOTBALL, OLD TRAFFORD



# GLOBAL FOOTBALL PRO

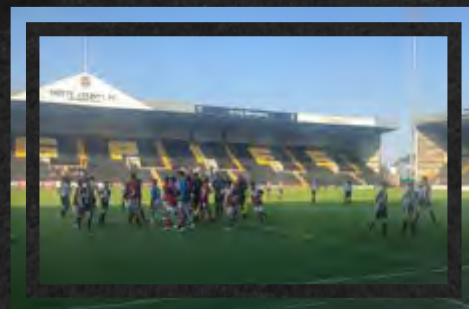
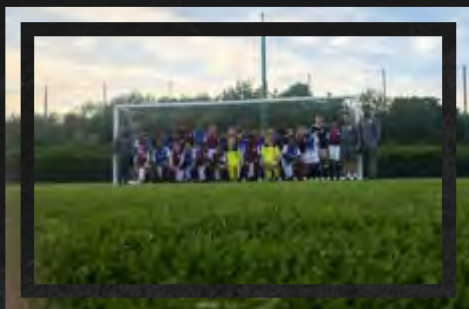
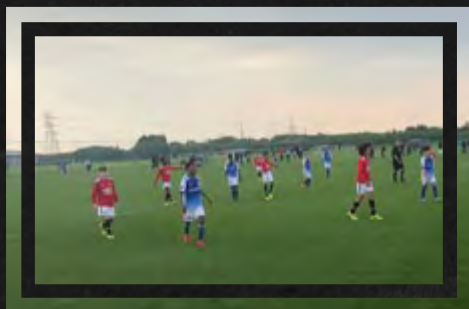
YOUR PROFESSIONAL FOOTBALL EXPERIENCE

PROFESSIONAL PLAYER/SHOWCASE EXPERIENCE



## PROFESSIONAL PLAYER/SHOWCASE EXPERIENCE

- ALL INCLUSIVE PROFESSIONAL TOUR
  - SHOWCASE FRIENDLIES
- ELITE TRAINING AT SGP AND PRO CLUB ACADEMIES
  - NATIONAL FOOTBALL MUSEUM
- Q&A WITH FORMER & CURRENT PROFESSIONAL PLAYERS
  - EX PROFESSIONAL PLAYERS COACHING
  - WATCH **LIVE** PREMIER LEAGUE MATCHES
- ALL INCLUSIVE TOUR AT ST. GEORGE'S PARK
  - EXCLUSIVE TEAM ACTIVITIES
  - PROFESSIONAL CLUB STADIUM TOURS





# GLOBAL FOOTBALL PRO

YOUR PROFESSIONAL FOOTBALL EXPERIENCE

PROFESSIONAL PLAYER EXPERIENCE



## PROFESSIONAL PLAYER EXPERIENCE SAMPLE ITINERARY

DEPART CHOSEN AIRPORT FOR THE UK.

**DAY 1:** MORNING ARRIVAL AT AIRPORT, TRANSFER TO CHOSEN HOTEL, LUNCH, TEAM INTRO BY GLOBAL FOOTBALL PRO, EVENING MEAL.

**DAY 2:** BREAKFAST, PROFESSIONAL TRAINING AT ST. GEORGE'S PARK, LUNCH, PROFESSIONAL TRAINING AT ST. GEORGE'S PARK, EVENING MEAL.

**DAY 3:** BREAKFAST, PROFESSIONAL TRAINING AT PRO CLUB ACADEMY, LUNCH, FREE TIME, SHOWCASE GAME 1 AT PRO CLUB ACADEMY, RECOVERY SESSION, EVENING MEAL.

**DAY 4:** BREAKFAST, ALTON TOWERS/WARWICK CASTLE TEAM DAY, EVENING MEAL.

**DAY 5:** BREAKFAST, PROFESSIONAL TRAINING AT ST. GEORGE'S PARK, LUNCH, SHOWCASE GAME 2 AT ST. GEORGE'S PARK, EVENING MEAL.

**DAY 6:** BREAKFAST, SURPRISE TEAM ACTIVITY, LUNCH, WATCH A LIVE MATCH, EVENING MEAL.

**DAY 7:** BREAKFAST, PROFESSIONAL TRAINING AT PRO CLUB ACADEMY, LUNCH, SHOWCASE GAME 3 AT CLUB ACADEMY, EVENING MEAL.

**DAY 8:** BREAKFAST, MANCHESTER UNITED AND MANCHESTER CITY STADIUM TOUR, LUNCH, MANCHESTER CITY ACADEMY TOUR, NATIONAL FOOTBALL MUSEUM + Q&A WITH GUEST PLAYER, SHOWCASE GAME 4, RETURN TO HOTEL, EVENING MEAL.

**DAY 9:** BREAKFAST, TRAVEL TO LONDON, WEMBLEY & ARSENAL/CHELSEA/TOTTENHAM STADIUM TOURS, LUNCH, AFTERNOON SHOPPING/SIGHT SEEING, EVENING MEAL.

**DAY 10:** BREAKFAST, DEPART FOR CHOSEN AIRPORT AND RETURN HOME.

[WWW.GLOBALFOOTBALLPRO.COM](http://WWW.GLOBALFOOTBALLPRO.COM)

**ST. GEORGE'S  
PARK**

**IT7 Audio**



England



Aston Villa



Brazil



Barcelona



Juventus



Argentina

**Greatest Kits is a vintage football clothing boutique specialising in original retro shirts. We aim to make official garments from the '80s and '90s acquirable once again for our customers, to help re-live the most iconic moments of the beautiful game.**



@greatest\_kits



Liverpool FC



[www.greatestkits.co.uk](http://www.greatestkits.co.uk)



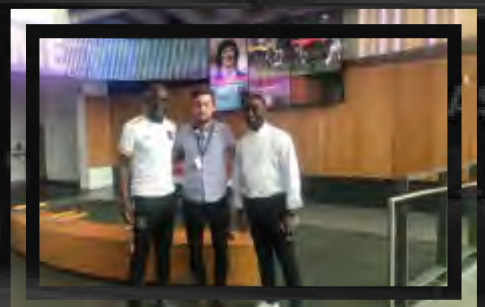
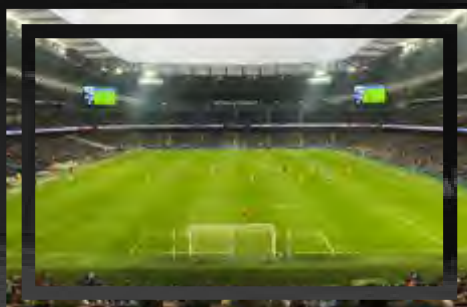
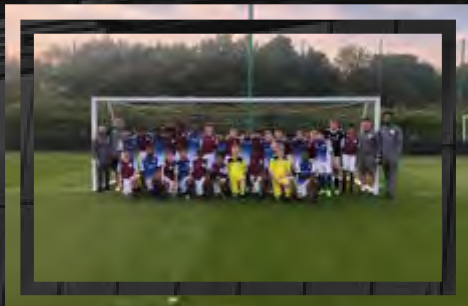
Manchester Utd



# GLOBAL FOOTBALL PRO

YOUR PROFESSIONAL FOOTBALL EXPERIENCE

PROFESSIONAL PLAYER/SHOWCASE GALLERY



# GLOBAL FOOTBALL PRO

YOUR PROFESSIONAL FOOTBALL EXPERIENCE

EXCLUSIVE TOURNAMENT EXPERIENCE



## EXCLUSIVE ELITE TOURNAMENT EXPERIENCE

- INTERNATIONAL CUP COMPETITION
  - SHOWCASE FRIENDLIES
- PROFESSIONAL TRAINING AT SGP & PRO CLUB ACADEMIES
- PLAY AGAINST ENGLISH/INTERNATIONAL ACADEMIES
- ALL INCLUSIVE TOURNAMENT AT ST. GEORGE'S PARK
  - WATCH **LIVE** PREMIER LEAGUE MATCHES
- ONSITE/OFFSITE ACCOMMODATION OPTIONS
  - EXCLUSIVE TEAM ACTIVITIES
- PROFESSIONAL CLUB STADIUM TOURS
  - NATIONAL FOOTBALL MUSEUM
- Q&A WITH FORMER & CURRENT PROFESSIONAL PLAYERS
  - TROPHIES AND AWARDS



[WWW.GLOBALFOOTBALLPRO.COM](http://WWW.GLOBALFOOTBALLPRO.COM)

**ST**  
**GEORGE'S**  
**PARK**



# GLOBAL FOOTBALL PRO

YOUR PROFESSIONAL FOOTBALL EXPERIENCE

EXCLUSIVE TOURNAMENT EXPERIENCE



## EXCLUSIVE TOURNAMENT EXPERIENCE SAMPLE ITINERARY

DEPART CHOSEN AIRPORT FOR THE UK.

**DAY 1:** MORNING ARRIVAL AT AIRPORT, TRANSFER TO CHOSEN HOTEL, LUNCH, TEAM INTRODUCTION BY GLOBAL FOOTBALL PRO, EVENING MEAL.

**DAY 2:** BREAKFAST, PROFESSIONAL TRAINING AT ST. GEORGE'S PARK, LUNCH, SHOWCASE GAME VS PRO ACADEMY, EVENING MEAL.

**DAY 3:** BREAKFAST, PROFESSIONAL TRAINING AT PRO ACADEMY, LUNCH, FREE TIME, SHOWCASE GAME VS PRO ACADEMY, RECOVERY SESSION, EVENING MEAL.

**DAY 4:** BREAKFAST, SURPRISE TEAM ACTIVITY AT SGP, LUNCH, INTERNATIONAL TOURNAMENT DAY 1, EVENING MEAL

**DAY 5:** BREAKFAST, PROFESSIONAL TRAINING AT SGP, LUNCH, GAME VS PRO ACADEMY.

**DAY 6:** BREAKFAST, INTERNATIONAL TOURNAMENT DAY 2, LUNCH, TOURNAMENT DAY 2 CONTINUED, EVENING MEAL.

**DAY 7:** BREAKFAST, INTERNATIONAL TOURNAMENT PLAYOFF/FINALS DAY, EVENING MEAL.

**DAY 8:** BREAKFAST, MANCHESTER UNITED STADIUM TOUR, LUNCH, MANCHESTER CITY STADIUM TOUR & MANCHESTER CITY ACADEMY TOUR, NATIONAL FOOTBALL MUSEUM + Q&A SESSION, GAME VS PRO ACADEMY, RETURN TO HOTEL, EVENING MEAL

**DAY 9:** BREAKFAST, TRAVEL TO LONDON, WEMBLEY & ARSENAL/CHELSEA/TOTTENHAM STADIUM TOURS, LUNCH, AFTERNOON SHOPPING/SIGHT SEEING, EVENING MEAL.

**DAY 10:** BREAKFAST, DEPART FOR CHOSEN AIRPORT.

[WWW.GLOBALFOOTBALLPRO.COM](http://WWW.GLOBALFOOTBALLPRO.COM)

ST. GEORGE'S  
PARK



IT7 Audio

# GLOBAL FOOTBALL PRO

YOUR PROFESSIONAL FOOTBALL EXPERIENCE

EXCLUSIVE TOURNAMENT EXPERIENCE



## EXCLUSIVE TOURNAMENT EXPERIENCE SAMPLE FORMAT



GROUP 1  
TEAM A  
TEAM B  
TEAM C  
TEAM D

GROUP 2  
TEAM E  
TEAM F  
TEAM G  
TEAM H

### TOURNAMENT ROUND 1:

TEAM A VS TEAM C  
TEAM B VS TEAM D

TEAM E VS TEAM G  
TEAM F VS TEAM H

### TOURNAMENT ROUND 2:

TEAM A VS TEAM B  
TEAM D VS TEAM C

TEAM E VS TEAM F  
TEAM H VS TEAM G

### TOURNAMENT ROUND 3:

TEAM A VS TEAM D  
TEAM B VS TEAM C

TEAM E VS TEAM H  
TEAM G VS TEAM F

### SEMI FINALS:

GAME 1: WINNER GROUP 1 V RUNNER UP GROUP 2  
GAME 2: WINNER GROUP 2 V RUNNER UP GROUP 1

### INTERNATIONAL CUP FINAL:

WINNERS OF GAME 1 PLAYS WINNERS OF GAME 2

\*\* (GFP SHIELD TROPHY WILL REPLICATE CHAMPIONS CUP SO ALL TEAMS GUARANTEED 4 GAMES) \*\*



WWW.GLOBALFOOTBALLPRO.COM





# GLOBAL FOOTBALL PRO

YOUR PROFESSIONAL FOOTBALL EXPERIENCE



## FORTHCOMING 2019 TOURNAMENTS

BOYS U12 TOURNAMENT AT ST. GEORGE'S PARK

The poster features the Global Football Pro logo at the top. Below it, the text reads "U12 INTERNATIONAL CUP MAY 2019 GFP 2ND EDITION". A large image of a Nike football is in the background. At the bottom, it says "ST. GEORGE'S PARK", "GLOBAL FOOTBALL PRO", "YOUR PROFESSIONAL FOOTBALL EXPERIENCE", "MAY 19TH - 28TH 2019", and "WWW.GLOBALFOOTBALLPRO.COM".

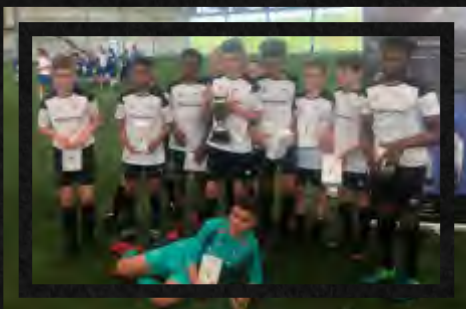
BOYS U14 TOURNAMENT AT MCFC ACADEMY

The poster features the Global Football Pro logo at the top. Below it, the text reads "INAUGURAL U14 INTERNATIONAL CUP EXCLUSIVELY BASED AT MANCHESTER CITY FOOTBALL ACADEMY". The background shows a football field. At the bottom, it says "GLOBAL FOOTBALL PRO", "YOUR PROFESSIONAL FOOTBALL EXPERIENCE", "JUNE 2019 (DATES TBC)", and "WWW.GLOBALFOOTBALLPRO.COM".

GIRLS U16 TOURNAMENT AT ST. GEORGE'S PARK

The poster features the Global Football Pro logo at the top. Below it, the text reads "INAUGURAL U16 GIRLS INTERNATIONAL CUP JULY 2019". The background shows a football field. At the bottom, it says "ST. GEORGE'S PARK", "GLOBAL FOOTBALL PRO", "YOUR PROFESSIONAL FOOTBALL EXPERIENCE", "JULY 26TH - AUG 3RD 2019", and "WWW.GLOBALFOOTBALLPRO.COM".

## GLOBAL FOOTBALL PRO U12 INTERNATIONAL CUP 2018 AT ST. GEORGE'S PARK GALLERY











RE, SOME DRAWN HERE BUT

MANCHESTER CITY

MANCHESTER CITY

MANCHESTER CITY





# GLOBAL FOOTBALL PRO

YOUR PROFESSIONAL FOOTBALL EXPERIENCE

## GLOBAL FOOTBALL PRO PROFESSIONAL EXPERIENCE TOURS



## GLOBAL FOOTBALL PRO PROFESSIONAL EXPERIENCE TOURS

### GLOBAL FOOTBALL PRO ALL INCLUSIVE TOURS PACKAGES INCLUDES:

- FULL BOARD ACCOMMODATION (BASED ON 2 SHARING)
- AIRPORT TRANSFERS AND ALL TRANSPORT TO THE AGREED ITINERARIES
  - 3 MEALS PER DAY (BREAKFAST, LUNCH, EVENING MEAL)
  - SHOWCASE FRIENDLIES VS PRO ACADEMIES OR AGREED LEVEL TEAMS
    - FULL KIT LAUNDRY AFTER GAMES
- MATCH TICKET FOR LIVE MATCHES (GAME CHOICE SUBJECT TO AVAILABILITY)
  - TOURNAMENT ENTRY (ELITE TOURNAMENT TOUR ONLY)
    - WATER PROVIDED FOR TRAINING AND GAMES
  - ELITE TRAINING AT SGP & PROFESSIONAL CLUB ACADEMIES
    - NATIONAL FOOTBALL MUSEUM IN MANCHESTER
  - Q&A WITH GUEST FORMER/CURRENT PROFESSIONAL PLAYERS
- EXCLUSIVE TEAM ACTIVITIES INCLUDING ALTON TOWERS, WARWICK CASTLE, LASER COMBAT, TEQBALL, CITY CENTRE VISITS
  - PROFESSIONAL CLUB STADIUM TOURS
  - GLOBAL FOOTBALL PRO SURPRISE GIFT

**ST**  
**GEORGE'S**  
**PARK**

**ST**  
**GEORGE'S**  
**PARK**

EXCLUDES: FLIGHTS, VISA, TRAVEL/INJURY/CANCELLATION INSURANCE

[WWW.GLOBALFOOTBALLPRO.COM](http://WWW.GLOBALFOOTBALLPRO.COM)



# WORLD IS CURVED

2nd Teqball World Cup, Reims | 2018



# JOIN THE TEQERS!

Teqball All Stars Cup, Luxembourg | 2017



Gullit, Karembeu, Gallas, Pirès, Puyol, Ricardo, Gomes, Langers, Sabrosa

TEQBALL<sup>®</sup>  
ARE YOU TEQ?

WWW.TEQBALL.COM  
INFO@TEQBALL.COM







# GLOBAL FOOTBALL PRO

## PROFESSIONAL TESTIMONIALS



A priority at FC Dallas is international competition for our players. We are committed to player development and being able to provide these unique opportunities is imperative to us. Global Football Pro nailed it, capturing a world class experience, culture, competition and outstanding professionalism. Their attention to detail was evident and represents their experience within the game. To be able to put our players up against top, category one, professional academies and play at the likes of St. Georges Park, Manchester United's Carrington Training Complex, Aston Villa's Bodymoor Heath Training Ground and Notts County's famous Meadow Lane Stadium is second to none, that will enhance and grow our young players at the highest level. The hospitality shown and generosity provided is a testament to the people involved at GFP and we sincerely look forward to returning. This is something that all clubs should do for their players.

John Gall  
Director of Coaching - FC Dallas



Our U12s attended the GFP tournament recently and it was an outstanding couple of days for all the players and staff. The tournament was exceptionally well run and provided a competitive experience for all players that took part. The organisers were in constant contact ensuring all of our needs were catered for and combined with the first class facility at St George's Park, meant our players had memories that they will never forget. I hope more of our teams can take part in GFP tournaments in the future and I would have no hesitation in recommending them to any potential teams and clubs.



Gareth Owen  
Head of the u7-12s - Stoke City

On Behalf of Durham Soccer players and Parents I wanted to thank Global Football Pro for the great tournament and tour experience. Being able to play our tournament games at St George's Park was a truly incredible experience. The fields were excellent and the competition was top notch. Having our players play against some of the best professional football academies in the UK such as Manchester City and US Academy FC Dallas showed our players where the bar is set and where our players need to be to achieve their goals. Having the opportunity to meet and spend time with former Premier League stars like Ian Taylor and Andy Cole only adds to the value of this amazing event. We look forward to returning next season and making this event an annual trip for our young players. "Looking forward to next year"

Ron Clarke  
Director of Soccer Development  
Oshawa Kicks SC



A thoroughly enjoyable tournament played in a competitive spirit. Coaches and players alike enjoyed the mix of teams from across the pond as well as very familiar local rivals and of course it's always nice for the young players to experience the St George's Park facilities.



Lee Moran  
Foundation Phase Lead Coach  
Nottingham Forest FC





# GLOBAL FOOTBALL PRO

## PROFESSIONAL TESTIMONIALS



Derby County entered the Global Football Pro International Cup 2018 and were very impressed with the pre tournament organisation, the facilities and also the day to day running of the tournament itself. Our lads had a fabulous experience and we very much look forward to a kind invitation to enter next year.



John Barton  
Academy Operations Manager  
Derby County

Thank you very much for arranging our Under 12's game v FC Dallas, this is a really important part of the development of our players in terms of playing teams away from what we would normally do within our games programme as a Category 1 Academy. Playing teams from overseas always provides our players with a different challenge and more importantly a different learning experience be that tactically, technically or socially or psychologically.

In terms of tactics teams play now in a certain way in Academy football in this country and that can be a similar experience on a weekly basis whereas teams from abroad may approach games from a different angle than boy's have experienced before. Technically they may get more or less time given the standard of the boy's they will play against and both again are great learning experiences. Socially and psychologically to come up against teams from slightly different cultures and approaches opens their eyes to how things can be done differently whilst trying to achieve similar goals.

All in all a fantastic opportunity for a different challenge and learning that will be key to their development as young players and people.

Sean Verity  
Assistant Academy Manager  
Aston Villa



"Can't thank Global Football Pro enough for inviting us to participate in their inaugural U12 Tournament at St George's Park. The quality of competition they provided along with access to world class playing facilities and tours made for a once in a lifetime opportunity for our players and family's. Under the leadership of Kevin, Ian, Mike and Lewis, GFP reflect the qualities of a highly professional organization that deliver exceptional value, individual attention to detail and truly memorable experiences. I would highly recommend them and cannot wait to work with them again and be part of their future events"

Sanford Carabin  
Technical Director  
Durham Region Soccer Association.



# GLOBAL FOOTBALL PRO



YOUR PROFESSIONAL FOOTBALL EXPERIENCE

COACHING MASTERCLASS EXPERIENCE

amazon  
30 YEARS  
GROUP PLC

PASSION  
SPORTS

## COACHING MASTERCLASS EXPERIENCE

THIS EXPERIENCE GIVES YOU THE UNIQUE OPPORTUNITY TO BOOK A FORMER PREMIER LEAGUE/PROFESSIONAL PLAYER (MALE OR FEMALE) TO TRAVEL TO YOUR CLUB/ACADEMY/SCHOOL FOR A COACHING MASTERCLASS. ONE DAY EVENTS TO WEEKLY CAMPS AVAILABLE UPON REQUEST.

CONTACT US NOW FOR MORE DETAILS.  
EMAIL: [INFO@GLOBALFOOTBALLPRO.COM](mailto:INFO@GLOBALFOOTBALLPRO.COM)





# GLOBAL FOOTBALL PRO

YOUR PROFESSIONAL FOOTBALL EXPERIENCE

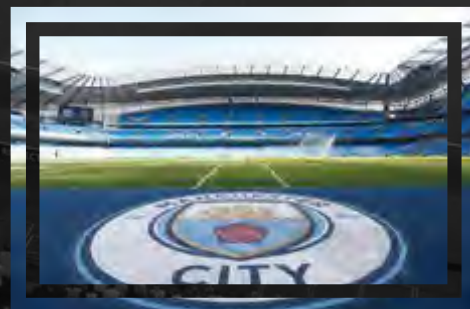
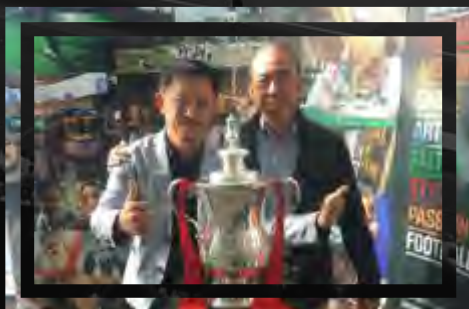
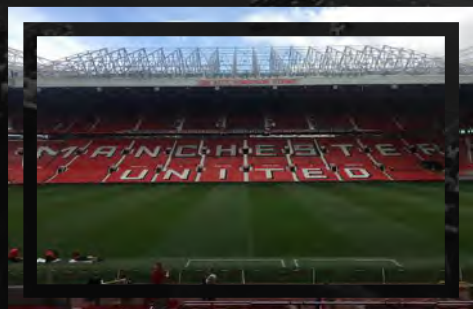
PROFESSIONAL FAN EXPERIENCE



## PROFESSIONAL FAN EXPERIENCE

GLOBAL FOOTBALL PRO OFFER FOOTBALL FANS OF ALL AGES FROM ALL OVER THE WORLD THE OPPORTUNITY TO GAIN A TRUE INSIGHT INTO THE PROFESSIONAL GAME IN THE UK. WATCH LIVE PREMIER LEAGUE AND CHAMPIONSHIP MATCHES OR CHOOSE THE TEAMS YOU SUPPORT TO WATCH. TRAVEL AROUND AND INSIDE THE BEST STADIUMS, MEET & GREET FORMER AND CURRENT PREMIER LEAGUE/PROFESSIONAL PLAYERS AND ASK THE QUESTIONS YOU'VE ALWAYS WANTED TO ASK. PROFESSIONAL FOOTBALL SEMINARS WITH REFEREES, AGENTS, PLAYERS, MANAGERS AND COACHES WILL GIVE YOU A FULL PROFESSIONAL FAN EXPERIENCE.

CONTACT US NOW FOR MORE DETAILS.  
EMAIL: [INFO@GLOBALFOOTBALLPRO.COM](mailto:INFO@GLOBALFOOTBALLPRO.COM)







# GLOBAL FOOTBALL PRO



## • STADIUM TOURS •

### PROFESSIONAL CLUB STADIUMS



MUFC - OLD TRAFFORD



MCFC - ETIHAD



TOTTENHAM HOTSPUR STADIUM



ARSENAL - EMIRATES



LIVERPOOL - ANFIELD



ASTON VILLA - VILLA PARK



CHELSEA - STAMFORD BRIDGE



ENGLAND - WEMBLEY





# GLOBAL FOOTBALL PRO



## • TOURS •

### NATIONAL FOOTBALL MUSEUM - MANCHESTER



THE NATIONAL FOOTBALL MUSEUM IS A MUSEUM AT THE URBIS BUILDING IN MANCHESTER CITY CENTRE, FOUNDED TO PRESERVE, CONSERVE AND INTERPRET IMPORTANT COLLECTIONS OF FOOTBALL MEMORABILIA. THE MUSEUM WAS ORIGINALLY IN DEEPDALE, PRESTON, LANCASHIRE, BUT MOVED TO MANCHESTER IN 2012.

DESPITE CRITICAL ACCLAIM AND ATTRACTING 100,000 VISITORS PER YEAR, FUNDING WAS REPEATEDLY AN ISSUE. IN 2007, IT HAD AN INCOME OF £791,256 AGAINST OUT-GOINGS OF £1,231,195. THE TRUSTEES WERE CONCERNED ABOUT THE MUSEUM'S LONG-TERM FUTURE. IN 2009, THEY APPROACHED MANCHESTER CITY COUNCIL ABOUT MOVING THE MUSEUM. THE CITY COUNCIL OFFERED A FUNDING PACKAGE WORTH £2M PER YEAR FOR THE MUSEUM TO MOVE TO MANCHESTER. DESPITE AN IMPROVED OFFER OF £400,000 PER YEAR FROM PRESTON AND LANCASHIRE COUNCILS, THE TRUSTEES VOTED TO MOVE THE MUSEUM TO THE URBIS EXHIBITION CENTRE IN MANCHESTER.

THE MUSEUM REOPENED IN MANCHESTER ON 6 JULY 2012. IN AUGUST 2012 THAT THE NEW NATIONAL FOOTBALL MUSEUM ATTRACTED OVER 100,000 VISITORS IN THE FIRST SIX WEEKS OF OPENING. BY THE END OF APRIL 2013, THE MUSEUM REACHED ITS 350,000 TARGET AND IN UNDER 1 YEAR REACHED 1 MILLION VISITORS. IT NOW ATTRACTS OVER 500,000 VISITORS PER YEAR AND GROWING.





# GLOBAL FOOTBALL PRO TOURS



## SIGHT SEEING ATTRACTIONS - NORTH



THE TRAFFORD CENTRE



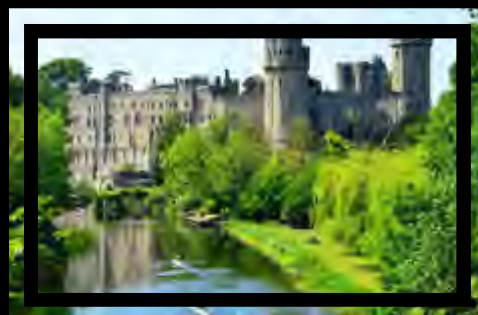
THE LOWRY MANCHESTER



ALTON TOWERS



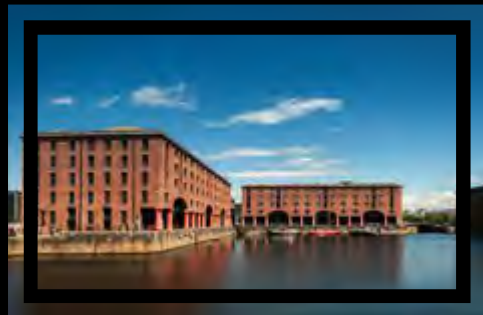
BIRMINGHAM BULLRING



STRATFORD UPON AVON



BIRMINGHAM MAILBOX



LIVERPOOL DOCKS



LIVERPOOL ONE SHOPPING



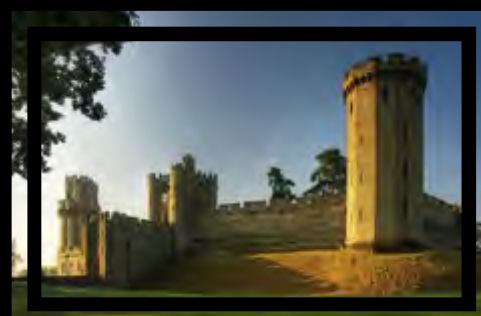
RESORTS WORLD BIRMINGHAM



YORK CASTLE AND GROUNDS



YORK CATHEDRAL



WARWICK CASTLE





# GLOBAL FOOTBALL PRO • TOURS •



## SIGHT SEEING ATTRACTIONS - SOUTH



**BIG BEN**



**LONDON EYE**



**BUCKINGHAM PALACE**



**TOWER BRIDGE**



**TRAFALGAR SQUARE**



**WESTMINSTER ABBEY**



**ROYAL ALBERT HALL**



**SHOPPING BICESTER VILLAGE**



**OXFORD CITY**



**MADAME TASSAUDS**



**HARRODS LONDON**



**WATCHES OF SWITZERLAND**



# THE NEW SUPERFRUIT DRINK SENSATION!



**AMAZING  
TASTE!**



WITH  
**POWER  
MINERALS**



**RE-ENERGISE - REVITALISE - RE-HYDRATE - REFRESHING - REVIVE**

[www.littlebigshot.com](http://www.littlebigshot.com)





# GLOBAL FOOTBALL PRO PLAYERS

\* THIS IS JUST A SMALL SELECTION OF OUR PORTFOLIO AND HAVE ACCESS TO MANY, MANY MORE \*

• IAN TAYLOR •  
EX ASTON VILLA



• DWIGHT YORKE •  
EX MANCHESTER UNITED



• ROBBIE FOWLER •  
EX LIVERPOOL



• ANDY COLE •  
EX MANCHESTER UNITED



• LEDLEY KING •  
EX SPURS



• MICHAEL OWEN •  
EX LIVERPOOL



• GIANFRANCO ZOLA •  
EX CHELSEA



• FABRICE MUAMBA •  
EX BOLTON



• DAVID JAMES •  
EX LIVERPOOL



• ROBERT PIRES •  
EX ARSENAL



• GEORGE BOATENG •  
EX ASTON VILLA



• JILL SCOTT •  
CURRENT MANCHESTER CITY



---

YOUR PROFESSIONAL

---

ERE, SOME DRAWN H



---

FOOTBALL EXPERIENCE

---



# GLOBAL FOOTBALL PRO

YOUR PROFESSIONAL FOOTBALL EXPERIENCE

GLOBAL FOOTBALL PRO PARTNERS





# GLOBAL FOOTBALL PRO

YOUR PROFESSIONAL FOOTBALL EXPERIENCE

**ST.**  
**GEORGE'S**  
**PARK**



@GLOBALFOOTBALLPRO

@GLOBALFOOTYPRO

BANK HOUSE, 57 MAIN STREET, ALREWAS, BURTON ON TRENT, ENGLAND, DE13 7AE +44 1283 204669

[WWW.GLOBALFOOTBALLPRO.COM](http://WWW.GLOBALFOOTBALLPRO.COM)